

SHIVESH ANANTA

PLOT NO. 175, SECTOR-24, ULWE

~ PROJECT FEATURES ~

- Clear Title CIDCO Transfer Plot.
- G+7 Storeyed Residential Commercial Project.
- Shops & 1 BHK & 2 BHK Flats.
- Rooftop Amenities
- Attractively Designed Entrance Lobby.
- Fully automatic high speed Elevators.
- Loans available by major banks & financial institutions.

SPECIFICATION

FLOORING

- 24" X 24" Vitrified flooring in all rooms
- Anti-skid flooring in toilet & bath

KITCHEN

- Granite Kitchen platform with S.S. Sink
- Designer glazed tiles upto beam height
- Provision for water purifier point

DOORS & WINDOWS

- Decorative laminate main door with wooden frame
- Decorative laminate internal doors with granite / wooden frame
- Powder coated aluminium sliding windows

PAINTS

- Putty finished internal walls
- Emulsion paints for external walls

ELECTRIFICATION

- Concealed copper wiring of polycab make with MCB's
- Adequate electrical points in all rooms
- ISI modular switches of premium make

BATHROOM & TOILET

- Designer glazed tiles upto beam level
- Branded sanitary wares of reputed make
- Premium Quality C.P. Fittings
- Provision for Exhaust Fan & Geyser point

WATER TANK

- Underground & Overhead water tank with adequate storage capacity

TERRACE

- Special water proofing treatment with China Chip flooring on top floor.

~ CONNECTIVITY ~

- 2mins. walkable to Sau Sakunthala Ramsheth Thakur School.
- 15mins. walkable to Bamandongri Rly. Stn.
- 10mins. drive to Proposed International Airport.
- 10mins. drive to Ramsheth Thakur Stadium
- 15mins. drive to Prop. Mumbai Trans Harbour Link.



COMPLETED PROJECTS



ORCHID BLISS
PLOT 72, SECTOR 5, ULWE



ORCHID HEIGHTS
PLOT 145, SECTOR 23, ULWE



SHIV JINAL
PLOT 169, SECTOR 23, ULWE



SHIVESH REVATI
PLOT 310, SECTOR 24, ULWE



SHIVESH ANANDI
PLOT 300, SECTOR 24, ULWE

ONGOING PROJECTS



SHIVESH EMERALD
PLOT 118, SECTOR 7, AIROLI



SHIVESH AURIUM
PLOT 96 & 102, SECTOR 11, KHARGHAR



SHIVESH ANANTA
PLOT 175, SECTOR 24, ULWE



SHIVESH SAPPHIRE
PLOT 271, SECTOR 26, ULWE



SHIVESH OPAL
PLOT 291, SECTOR 26, ULWE

Project By

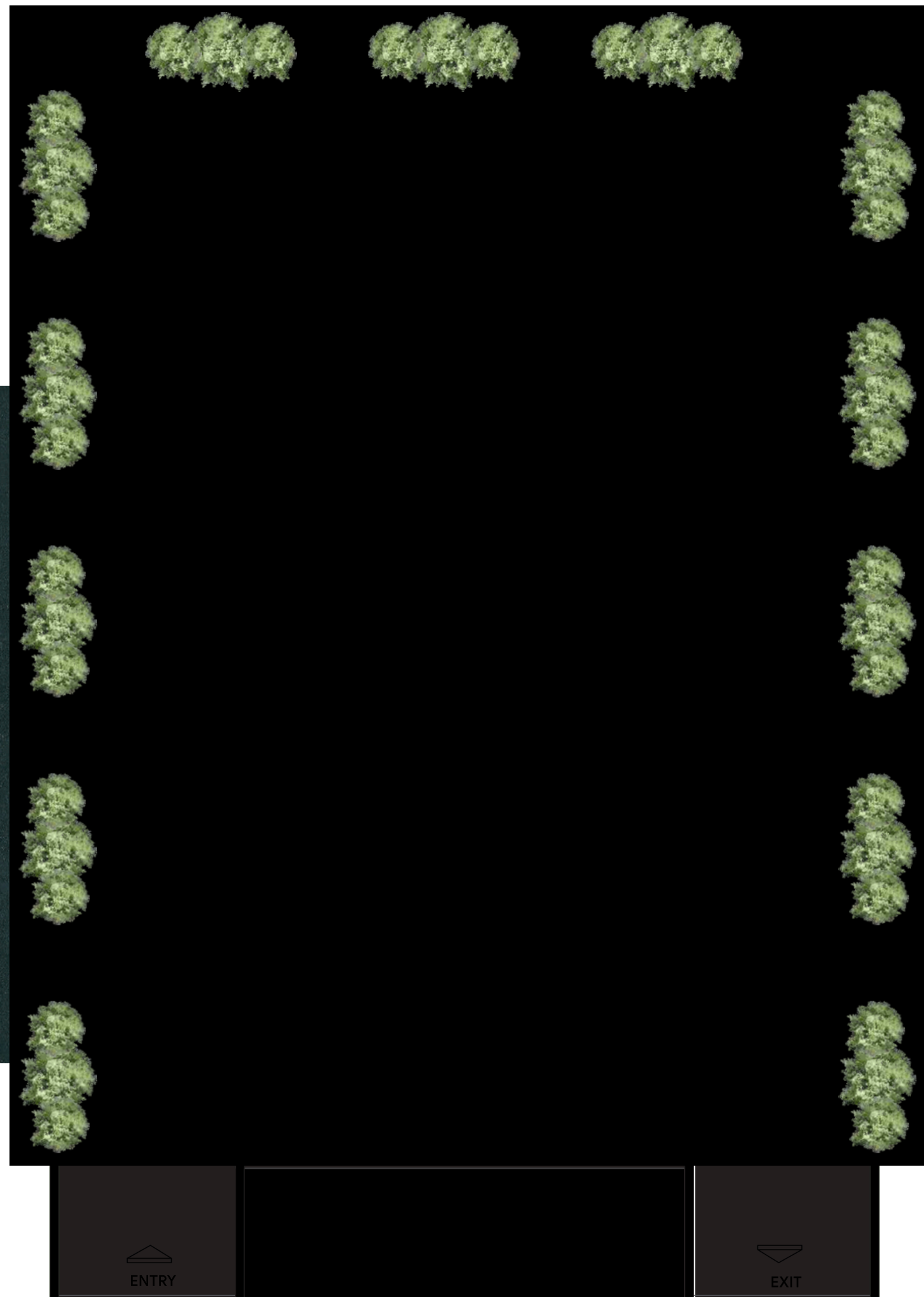
SHIVESH
REALTY PVT. LTD.
- building thoughtful homes -

Head Office Add:
A-411 Groma House, Sec-19, Vashi,
Navi Mumbai

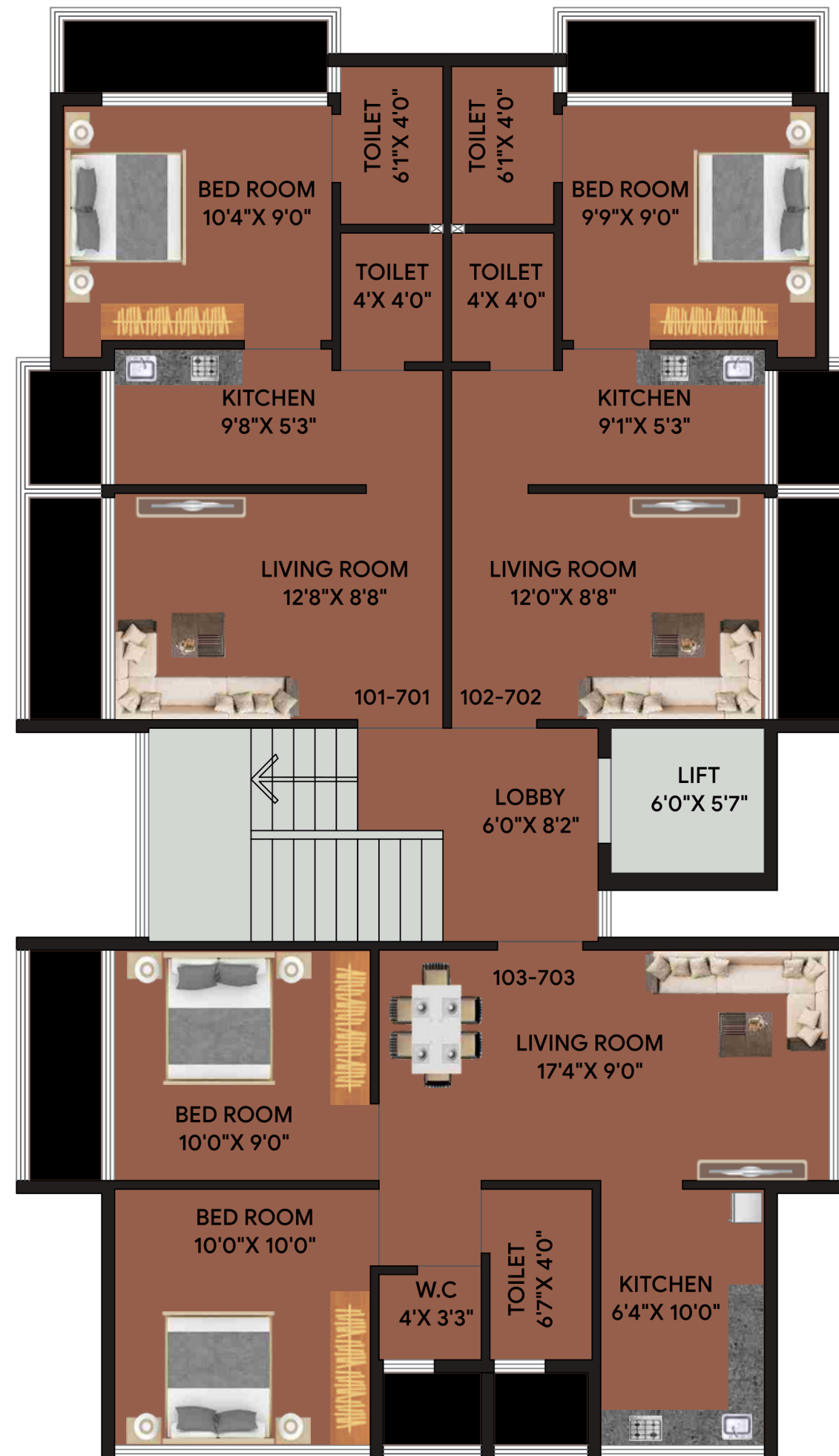
Email : info@shiveshrealty.com
Website : www.shiveshrealty.com
Contact : 9372327954 | 9222222077

Architect : ARCH-CONS
Legal Advisor : Adv. Sagar Pawar
Rcc Consultant : B.S. Sukhtankar

Disclaimer : All Plans, Drawing, Amenities, Facilities Etc. Are subject to approve of the respective authorised it would be changed, if necessary. They this creation remain with the developer. All rendering Pictures & Maps are the artist constructions & not actual depictions of the plot, roadways are landscaping. The brochure is for guidance & not a legal document the brochure should also reproduced, copied or made available other any form of transmission. The design & specification depicted in the brochure are subject to change without prior notice. Proposed development as mentioned in the brochure is subject to approved of complete authorities.



← 9.0 M. WIDE ROAD →
GROUND FLOOR PLAN



← 9.0 M. WIDE ROAD →
TYPICAL FLOOR PLAN



PROJECT MODERN AMENITIES

- Open to Sky Garden
- Kids Play Area
- Open Gymnasium
- Sitting Area
- Indoor Games