



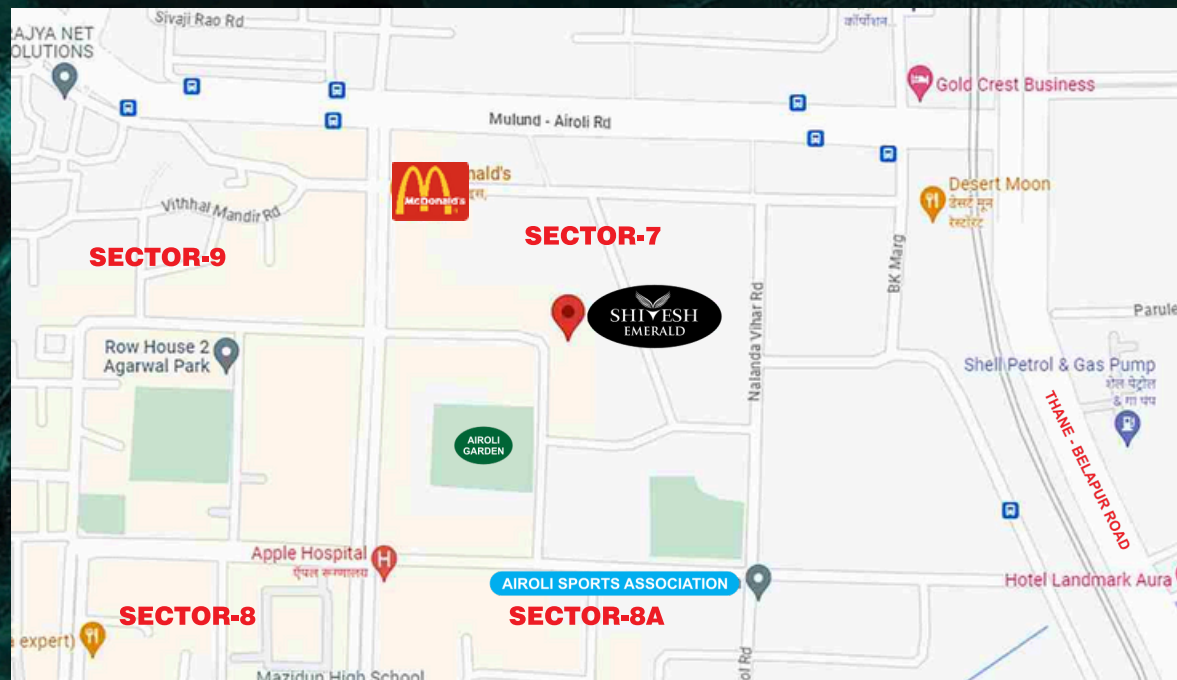
ABOUT US

“

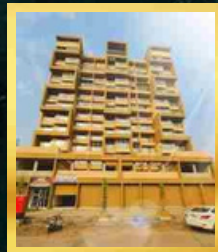
Today, the company enjoys a strong presence in Navi Mumbai, and has made its position as one of the growing companies in the real estate industry today with over 3,00,000 Sq.ft. Area delivered. We don't believe in creating just real estate projects. Instead, we believe in creating lifespaces that will stimulate your imagination and bring positive and higher energies into your life. As a group, we derive inspiration from nature and people. We believe in creating homes that give positive vibes, where people from all walks of life can surround themselves to the beauty of natural and peaceful surroundings, and get refreshed and recharged. We are a group that give high regards to morals and ethics. We believe in staying true to our inner conscience by being true to our work, our customers, our associates, our investors, partners and our employees, and creating harmonious benefits for all. Embark on a journey to self realization.

”

LOCATION MAP



COMPLETED PROJECTS



ORCHID BLISS
PLOT 72, SECTOR 5, ULWE



ORCHID HEIGHTS
PLOT 145, SECTOR 23, ULWE



SHIV JINAL
PLOT 169, SECTOR 23, ULWE



SHIVESH AURA
PLOT 298, SECTOR 17, ULWE



SHIVESH ANANDI
PLOT 300, SECTOR 24, ULWE

ONGOING PROJECTS



SHIVESH EMERALD
PLOT 271, SECTOR 26, ULWE



SHIVESH AURUM
PLOT 96 & 102, SECTOR 11, KHARGHAR



SHIVESH ANANTA
PLOT 175, SECTOR 24, ULWE



SHIVESH DAMODAR
PLOT 178, SECTOR 24, ULWE



SHIVESH REVATI
PLOT 310, SECTOR 24, ULWE



SHIVESH EMERALD

PLOT NO. 11B, SECTOR-7, AIROLI

Project By

SHIVESH
REALTY PVT LTD
- building thoughtful homes -

Head Office Add:
A-411 Groma House, Sec-19, APMC Market,
Vashi, Navi Mumbai

Email : emerald@shiveshrealty.com
Website : www.shiveshrealty.com
Contact : 9222 222 077 | 9372 327 954

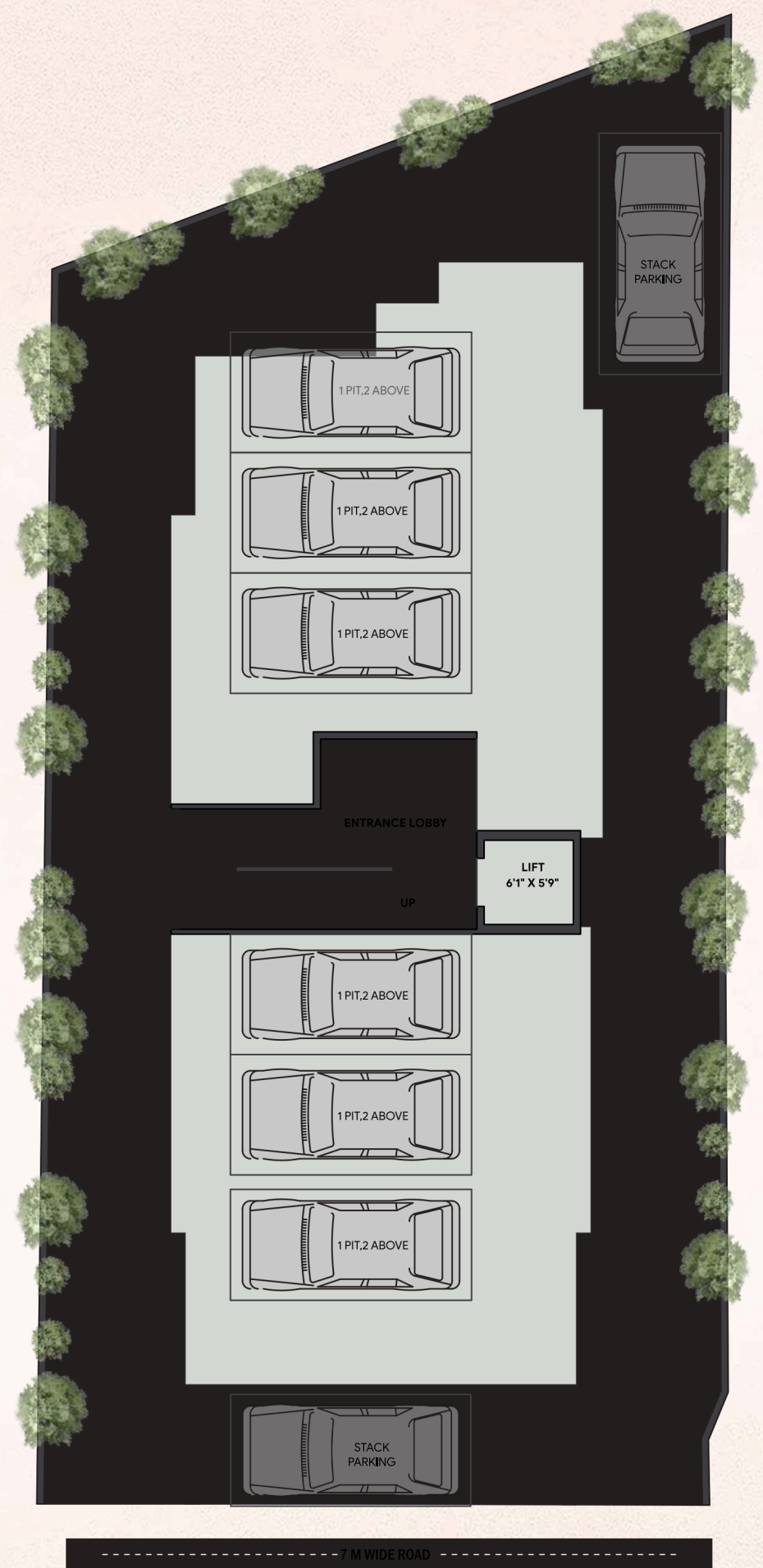
Architect : ARCH-CONS
Legal Advisor : Adv. Sagar Pawar
Rec Consultant : B.S. Sukhtankar

Disclaimer : All Plans, Drawing, Amenities, Facilities Etc. Are subject to approve of the respective authorised it would be changed, if necessary. They this creation remain with the developer. All rendering Pictures & Maps are the artist constructions & not actual depictions of the plot, roadways are landscaping. The brochure is for guidance & not a legal document the brochure should also reproduced, copied or made available other any form of transmission. The design & specification depicted in the brochure are subject to change without prior notice. Proposed development as mentioned in the brochure is subject to approved of complete authorities .

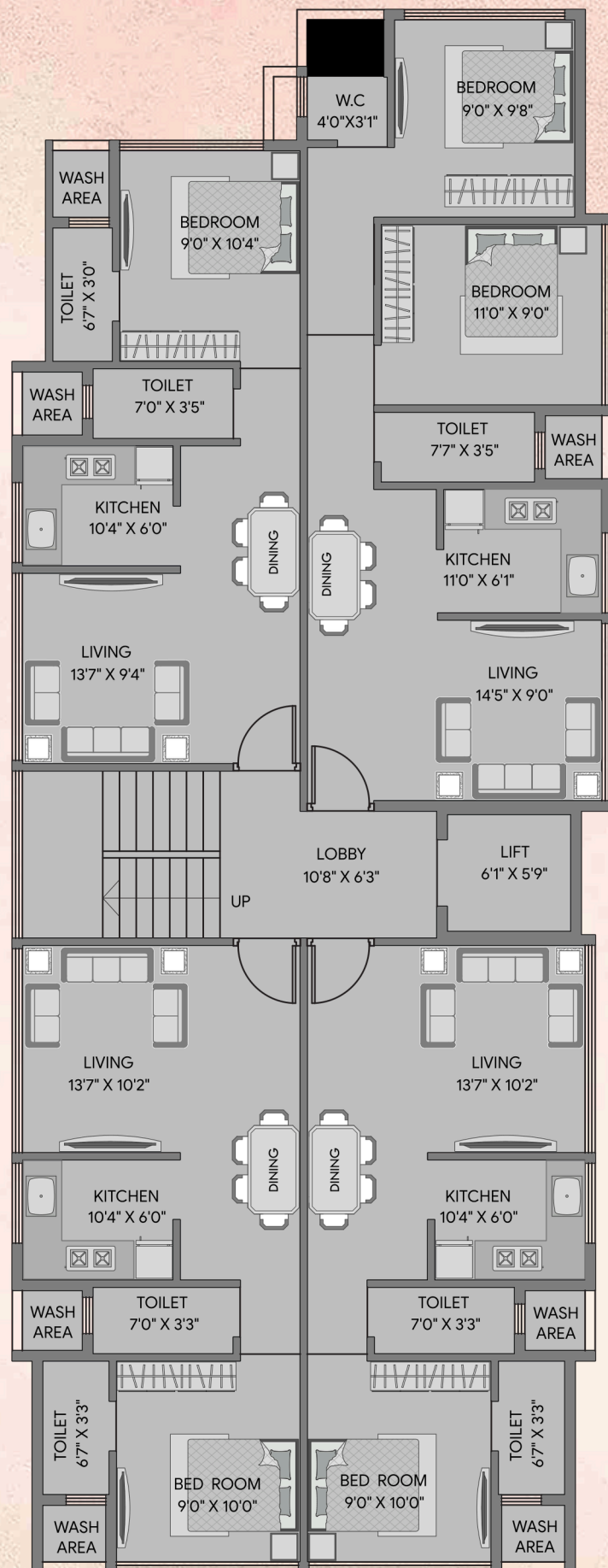


PROJECT MODERN AMENITIES

- Open to Sky Garden
- Kids Play Area
- Open Gymnasium
- Sitting Area
- Indoor Games



GROUND FLOOR PLAN



1ST TO 6TH FLOOR PLAN

PROJECT FEATURES

- Cidco Tendor Plot
- G+6 Storey
- Fully Residential
- 1BHK With Master Bedroom
- Exclusive 2BHK
- Earth Quake Resistance
- 14ft Height Entrance Lobby with Designed Italian Wall and Flooring
- Reputed make Lift
- Full Security With CCTV & Intercom Facilities

INTERNAL AMENITIES

FLOORING:

- Superior quality vitrified tiles (4'.0" x 2'.0").

KITCHEN:

- Superior quality digital wall tiles.
- Granite Kitchen Platform.
- Branded Sink.

TOILETS:

- Superior quality wall tiles.
- Branded Sanitary Fitting & Fixtures (Jaquar / Essco).

WALLS & PAINT:

- Double Coat plaster & Acrylic Paint on External face of building.
- Plastic paint for all internal surfaces.

DOORS AND WINDOWS:

- Teak wood frame main door & bedroom (Laminate Sunmica) full heights
- Powder coated / Anodized aluminium sliding windows with Plain / tinted glass with all hardware.

ELECTRIC:

- High grade concealed copper wiring with MCB & ELCB.
- Adequate electric AC, TV, Internet, Telephone points.
- Modern designer switches.

